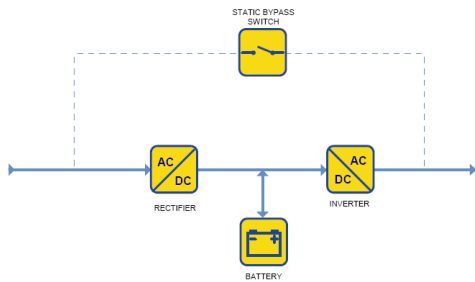


ALSO Schweiz AG
 Meierhofstrasse 5 · CH-6032 Emmen
 Telefon +41 41 266 11 11 · www.also.ch



Smart-UPS SRT - on-line UPS overview -

Advantages of double-conversion on-line:



- ▶ Electrical isolation for the equipment
- ▶ NO switch-over time (0 millisecond)
- ▶ Eliminating noise, transients, frequency and harmonic distortion problems
- ▶ Capability for long-term, extended battery operation (runtime in hours)
- ▶ Includes a bypass circuit
- ▶ Can regulate output frequency
- ▶ Power factor correction (PFC) provided, regardless of load type

UPS model	SURT1000XLI	SURT1000RMXLI	SRT2200XLI	SRT2200RMXLI
Power Input	IEC-320 C14	IEC-320 C14	IEC-320 C20 Cable optional 8500352H	IEC-320 C20 Cable optional 8500352H
ALSO part no.	1108676	9362748	9362945	9362944
Form factor	Tower	2U Rackmount	Tower	2U Rackmount
Capacity	1'000 VA / 700 Watt	1'000 VA / 700 Watt	2'200 VA / 1'980 Watt	2'200 VA / 1'980 Watt
Extended runtime	optional	optional	optional	optional
Bypass	Built-in	Built-in	Internal Bypass (Automatic and Manual)	Internal Bypass (Automatic and Manual)
Power Output	(6) IEC 320 C13	(6) IEC 320 C13	(8) IEC 320 C13 (2) IEC 320 C19	(8) IEC 320 C13 (2) IEC 320 C19
Weight (kg)	28	28	25	25
Communication	RS-232 / SmartSlot	RS-232 / SmartSlot	Serial (RJ45), USB (Type A) and SmartSlot	Serial (RJ45), USB (Type A) and SmartSlot
VP price incl tax	1'100.00	1500.00	1'400.00	2'000.00
EP price	750.00	1'100.00	1'300.00	1'400.00
UPS Management Modul	optional	optional	optional	optional

ALSO Schweiz AG
 Meierhofstrasse 5 · CH-6032 Emmen
 Telefon +41 41 266 11 11 · www.also.ch



Smart-UPS SRT - on-line UPS overview -

UPS model	SRT3000XLI	SRT3000RMXLI	SRT5KXLI	SRT5KRMXLI	SRT6KXLI	SRT6KRMXLI
						
Power Input	IEC-320 C20  Cable optional 8500352H 	IEC-320 C20  Cable optional 8500352H 	Hardwire (1 PH+N+G)	Hardwire (1 PH+N+G)	Hardwire (1 PH+N+G)	Hardwire (1 PH+N+G)
ALSO part no.	9362947	9362946	2151347	2151348	2151349	2151348
Form factor	Tower	2U Rackmount	Tower	3U Rackmount	Tower	4U Rackmount
Capacity	3'000 VA / 2'700 Watt	3'000 VA / 2'700 Watt	5'000 VA / 4'500 Watt	5'000 VA / 4'500 Watt	6'000 VA / 6'000 Watt	6'000 VA / 6'600 Watt
Extended runtime	optional	optional	optional	optional	optional	optional
Bypass	Internal Bypass (Automatic and Manual)	Internal Bypass (Automatic and Manual)	Internal Bypass (Automatic and Manual)	Internal Bypass (Automatic and Manual)	Internal Bypass (Automatic and Manual)	Internal Bypass (Automatic and Manual)
Power Output	(8) IEC 320 C13 (2) IEC 320 C19	(8) IEC 320 C13 (2) IEC 320 C19	(6) IEC 320 C13 (4) IEC 320 C19	(6) IEC 320 C13 (4) IEC 320 C19	Hardwire (1 PH+N+G) (6) IEC 320 C13 (4) IEC 320 C19	Hardwire (1 PH+N+G) (6) IEC 320 C13 (4) IEC 320 C19
Weight (kg)	31	31	55	55	60	60
Communication	Serial (RJ45), USB (Type A) and SmartSlot	Serial (RJ45), USB (Type A) and SmartSlot	Network management card and SmartSlot	Network management card and SmartSlot	Network management card and SmartSlot	Network management card and SmartSlot
VP price incl. tax	3'100.00	3'400.00	4'400.00	5'000.00	5'700.00	5'700.00
EP price	2'200.00	2'300.00	2'000.00	3'700.00	3'400.00	3'400.00
UPS Management Modul	optional	optional	Incl.	Incl.	Incl.	Incl.

ALSO Schweiz AG
Meierhofstrasse 5 · CH-6032 Emmen
Telefon +41 41 266 11 11 · www.also.ch



Smart-UPS SRT - on-line UPS overview -

UPS model	SRT8KXLI	SRT8KRMXLI	SRT10KXLI	SRT10KRMXLI	SURT15KRMXLI	SURT20KRMXLI
						
Power Input	Hardwire (1 PH+N+G) Hardwire (3 PH+N+G)	Hardwire (1 PH+N+G) Hardwire (3 PH+N+G)	Hardwire (1 PH+N+G) Hardwire (3 PH+N+G)	Hardwire (1 PH+N+G) Hardwire (3 PH+N+G)	Hardwire (1 PH+N+G) Hardwire (3 PH+N+G)	Hardwire (1 PH+N+G) Hardwire (3 PH+N+G)
ALSO part no.	2151353	2151352	2151357	2151356	1411555	1411556
Form factor	Tower	6U Rackmount	Tower	6U Rackmount	12U Rackmount	12U Rackmount
Capacity	8'000 VA / 8'000 Watt	8'000 VA /8400 Watt	10'000 VA /10'000 Watt	10'000 VA / 10'000 Watt	15'000 VA / 12'000 Watt	20'000 VA / 16'000 Watt
Extended runtime	optional	optional	optional	optional	optional	optional
Bypass	Internal Bypass (Automatic and Manual)	Internal Bypass (Automatic and Manual)	Internal Bypass (Automatic and Manual)	Internal Bypass (Automatic and Manual)	Internal Bypass (Automatic and Manual)	Internal Bypass (Automatic and Manual)
Power Output	Hardwire (1 PH+N+G) (6) IEC 320 C13 (4) IEC 320 C19	Hardwire (1 PH+N+G) (6) IEC 320 C13 (4) IEC 320 C19	Hardwire (1 PH+N+G) (6) IEC 320 C13 (4) IEC 320 C19	Hardwire (1 PH+N+G) (6) IEC 320 C13 (4) IEC 320 C19	Hardwire (3 PH+N+G) (8) IEC 320 C19	Hardwire (3 PH+N+G) (8) IEC 320 C19
Weight (kg)	112	112	112	112	248	248
Communication	Network management card and SmartSlot	Network management card and SmartSlot	Network management card and SmartSlot	Network management card and SmartSlot	RJ45 / RS-232 / SmartSlot	RJ45 / RS-232 / SmartSlot
VP price incl. tax	7'100.00	7'400.00	8'600.00	8'600.00	8'900.00	14'400.00
EP price	5'100.00	5'200.00	6'100.00	6'100.00	6'300.00	10'100.00
UPS Management Modul	Incl.	Incl.	Incl.	Incl.	Incl.	Incl.